

# Joomla/Mambo CB GroupJive

Version 2.7.0

## Quick-start Guide



GroupJive 2.7.0

document version 2.7.0 [build 18] – 22.January.2013

Copyright 2012-2013 – Joomlapolis.com

No portions of this manual may be reproduced or redistributed  
without the written consent of the author!

Author: Nick A. ([nant@joomlapolis.com](mailto:nant@joomlapolis.com))

**Table of Contents**

1	Introduction.....	4
1.1	What's it all about .....	4
1.2	Document Outline .....	4
1.3	Acknowledgements, Credits and Copyrights .....	4
1.4	Compatibility and Prerequisites .....	5
2	Installation .....	5
2.1	Distribution .....	5
2.2	GroupJive Main CB Plugin Installation .....	7
2.3	GroupJive Integration CB Plugins Installation .....	7
2.4	GroupJive English Language Plugin Installation .....	8
2.5	GroupJive Module Installation .....	8
2.6	Joomla Search Plugin for GroupJive Installation .....	8
3	Quick-start Configuration.....	9
4	Support.....	12
5	Conclusions.....	14

**Table of Figures**

Figure 1: CB Plugin Management area with GroupJive plugins installed ..... 9

Figure 2: CB GroupJive Administrative panel area ..... 10

Figure 3: GroupJive Menu with single item ..... 10

Figure 4: GroupJive frontend panel access ..... 11

Figure 5: GroupJive CB Groups tab with sub-tabs ..... 11

## 1 Introduction

This document describes the basic functionality and key features of the Joomla/Mambo Community Builder GroupJive plugin along with the basic steps a Joomla/Mambo website administrator should take to install the GroupJive related CB plugins and supporting module. Throughout this document the use of CB will be used to denote the Community Builder and GJ to denote GroupJive.

### 1.1 What's it all about

GJ is a set of CB plugins and a single (optional) CMS module that when installed and configured will add group functions to your CB powered website.

A group is simply defined as a set of users that share common interest and communicated these interests in a structured way by posting and sharing items of interest on various group specific channels.

### 1.2 Document Outline

The topics discussed cover the proper GJ installation, optional module installation and the initial setup of these within the Joomla environment. There is also a chapter describing upgrade process for Joomla 3.0.x / 2.5.x / 1.5.x websites.

### 1.3 Acknowledgements, Credits and Copyrights

The GJ CB plugin system has been developed by the CB Team and primarily by Kyle L. (aka krileon).

The plugins and modules of GJ are released under GPL with the following clause:

<b>All copyright statements must be kept. Derivate work must prominently duly acknowledge original work and include visible online links.</b>
---

This document is not released under GPL and no reproduction or distribution may take place without the author's permission.

## 1.4 Compatibility and Prerequisites

Version 2.7.0 of Community Builder GroupJive is compatible with Joomla 1.5.x (in native mode), Joomla 2.5.x and the latest Joomla 3.0.x series.

**CB GroupJive 2.7.0 must be installed on a CB 1.9+ environment.**

## 2 Installation

This chapter describes the initial steps an administrator of a Joomla/Mambo driven website should take to correctly install the CB suite. At this point the document describes all steps necessary to correctly install the CB suite without paying any specific attention to additional configuration options.

### 2.1 Distribution

The distribution package of the GroupJive 2.7.0 is a compressed zip file titled ***plug\_cbgroupjive\_270-unzip1st.zip*** comprised of the following files:

- ***plug\_cbgroupjive\_270.zip***  
This contains the main GroupJive CB plugin.
- ***int\_cbgroupjiveauto\_270.zip***  
This is the GroupJive Integration CB plugin that supports conditional and automatically forcing users into existing groups or create new ones, including categories, from substitutions.
- ***int\_cbgroupjiveabout\_270.zip***  
This is the GroupJive integration CB plugin that adds about group description functionality to your GroupJive installation.
- ***int\_cbgroupjiveevents\_270.zip***  
This is the GroupJive integration CB plugin that adds group events functionality to your GroupJive installation.
- ***int\_cbgroupjiveforums\_270.zip***  
This is the GroupJive integration CB plugin that adds group related forum discussions functionality (needs Kunena forum extension installed separately) to your GroupJive installation.

- ***int\_cbgrouvjivephoto\_270.zip***

This is the GroupJive integration CB plugin that adds photo media sharing functionality to your GroupJive installation.

- ***int\_cbgrouvjivevideo\_270.zip***

This is the GroupJive integration CB plugin that adds video sharing to your GroupJive installation.

- ***int\_cbgroujvewall\_270.zip***

This is the GroupJive integration CB plugin that adds wall posting functionality to your GroupJive installation.

- ***int\_cbgrouvjivefile\_270.zip***

This is the GroupJive integration CB plugin that adds file uploading functionality to your GroupJive installation.

- ***lang\_cbgrouvjiveenglish\_270.zip***

This is the GroupJive English language CB plugin that should be used to customise wording related appearance of your GroupJive installation. You can also use this plugin as a basis (template) to create your own GroupJive language plugin.

- ***mod\_cbgroujive\_270\_j15.zip***

This is the Joomla 1.5.x module package that can optionally be installed to work with your GroupJive installation.

- ***mod\_cbgroujive\_270\_j25.zip***

This is the Joomla 2.5.x / 3.0.x module package that can optionally be installed to work with your GroupJive installation.

- ***bot\_gjsearch\_270\_j15.zip***

This is the Joomla 1.5 plugin that will enable your Joomla 1.5 search function to also search for GroupJive data.

- ***bot\_gjsearch\_270\_j25.zip***

This is the Joomla 2.5/3.0 plugin that will enable your Joomla 2.5/3.0 search function to also search for GroupJive data.

- ***cbgj\_manual\_270.pdf***

This is the document you are currently looking at and contains installation and configuration instructions about GroupJive 2.7.0.

**Note:** If the distribution package contains elements with previous version numbers then there has been no update for that specific element.

The latest distribution package may be downloaded from the [www.joomlapolis.com](http://www.joomlapolis.com) website.

CB GroupJive language plugins can be downloaded from the JoomlaPolis forge area for GroupJive languages:

<http://forge.joomlapolis.com/projects/lan-gj>

If you cannot find your specific language and want to contribute/manage a CB GroupJive language project please contact nant (Nick) by visiting his profile and sending him a message:

<https://www.joomlapolis.com/my-profile/userprofile/nant>

## 2.2 GroupJive Main CB Plugin Installation

The main GroupJive CB plugin is contained in the ***plug\_cbgroupjive\_270.zip*** package and must be installed as a CB plugin using the CB Plugin manager area of your CB 1.9+ administrator environment.

Simply stated you need to access your Joomla backend administrator area and navigate to Components → Community Builder → Plugin Management and access the Install Plugin link to browse through your local storage to identify your copy of the ***plug\_cbgroupjive\_270.zip*** file and install it.

## 2.3 GroupJive Integration CB Plugins Installation

Using a similar method (via the CB Plugin Management area) you can install any or all of the integration plugins also part of your GJ distribution package (the integration package names start with '***int\_***').

## 2.4 GroupJive English Language Plugin Installation

The GroupJive English language package can also be (optionally) installed if you want to modify any of the default wordings found throughout your GroupJive installation (frontend or back-end). It is also a CB plugin and must be installed via the CB Plugin Management area.

## 2.5 GroupJive Module Installation

The ***mod\_cbgroujive\_270\_j15.zip*** package found in your GroupJive distribution (after decompressing) can be optionally installed on your Joomla 1.5.x website to work with your GroupJive installation. The module must be installed via the Joomla 1.5.x Extensions Manager. The ***mod\_cbgroujive\_270\_j25.zip*** package should be used on Joomla 2.5.x or Joomla 3.0.x websites.

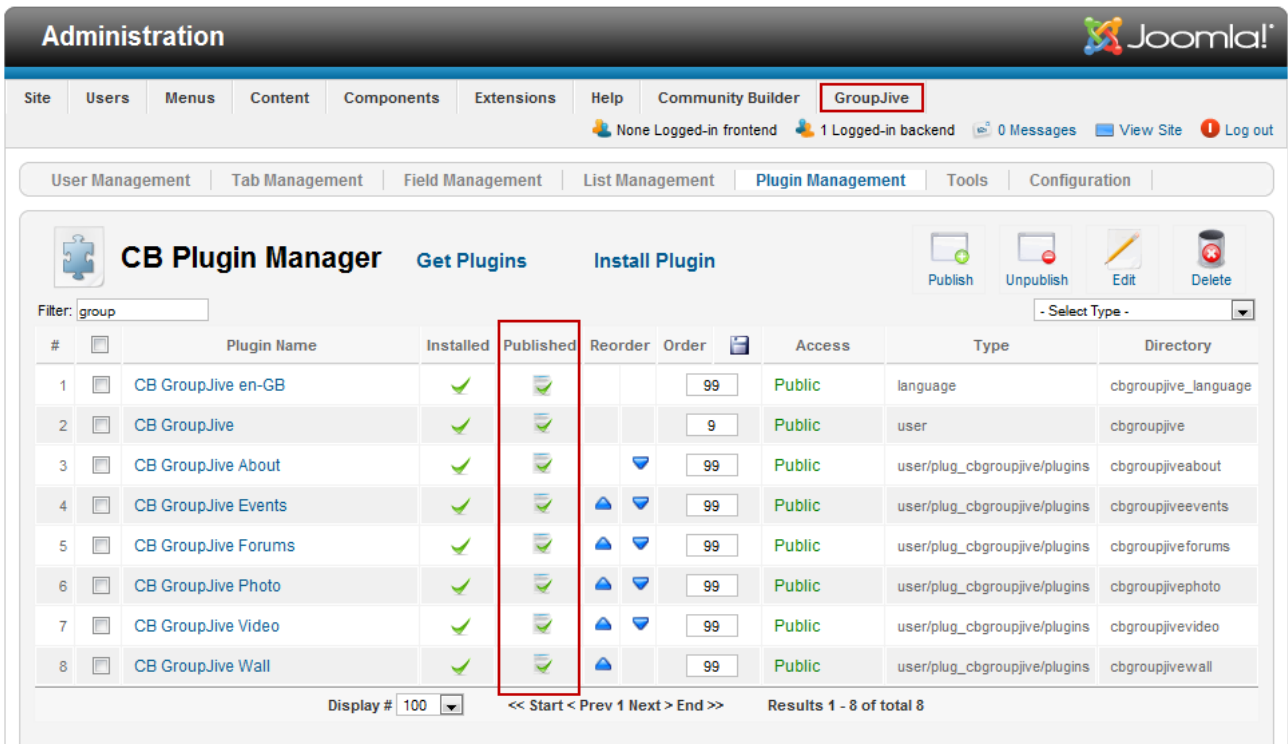
## 2.6 Joomla Search Plugin for GroupJive Installation

The ***bot\_gjsearch\_270\_j25.zip*** package found in your GroupJive distribution (after decompressing) can be optionally installed on your Joomla 2.5.x or Joomla 3.0.x website and enabled to work with the Joomla 2.5.x/3.0.x search plugin. The ***bot\_gjsearch\_270\_j15.zip*** package should be used on Joomla 1.5.x websites.



### 3 Quick-start Configuration

Once all the GroupJive related CB Plugins are installed you should be able to identify all the installed elements in the CB Plugin Management area as illustrated in **Figure 1**.



**Figure 1: CB Plugin Management area with GroupJive plugins installed**

You should enable/publish the installed plugins by clicking on their Published column icon to toggle their status from Not/Published (red X) to Published (green check-mark).

In **Figure 1** you will also notice that our CB Admin Navigation module (installed separately) will also support quick-links to our GroupJive area.

You can now access your GroupJive backend panel by either clicking on the GroupJive quick menu (if you have installed and configured the CB Admin Navigation module) or by clicking on the CB GroupJive plugin row in the CB Plugin Management area. Both methods will take you to the GroupJive administrative panel illustrated in **Figure 2**.

## CB GroupJive 2.7.0 – Quick-start Guide

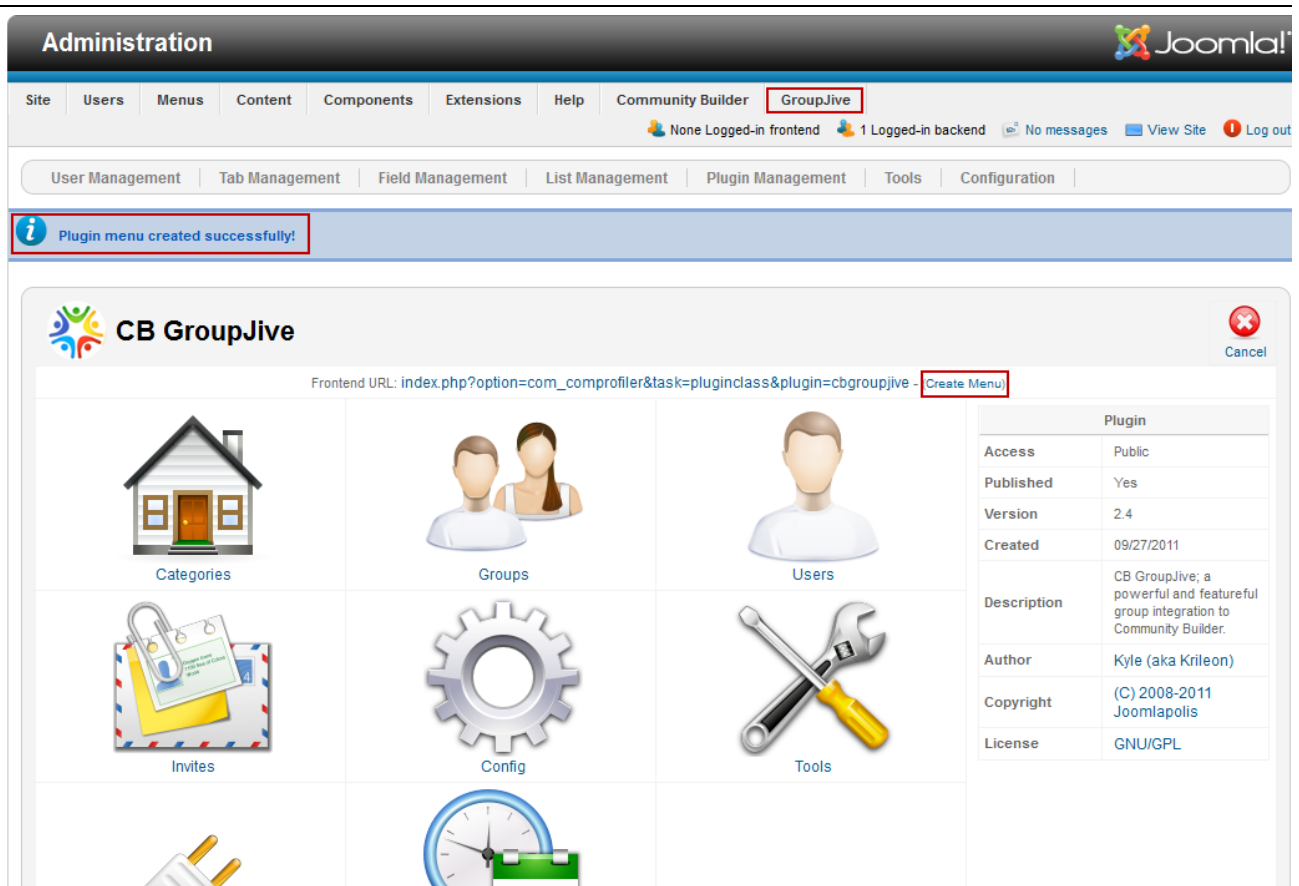


Figure 2: CB GroupJive Administrative panel area

We now have to click on the Create Menu link from our GroupJive panel and have a new GroupJive menu created for us. The resulting GroupJive menu with the single CB GroupJive menu item created is illustrated in **Figure 3**.

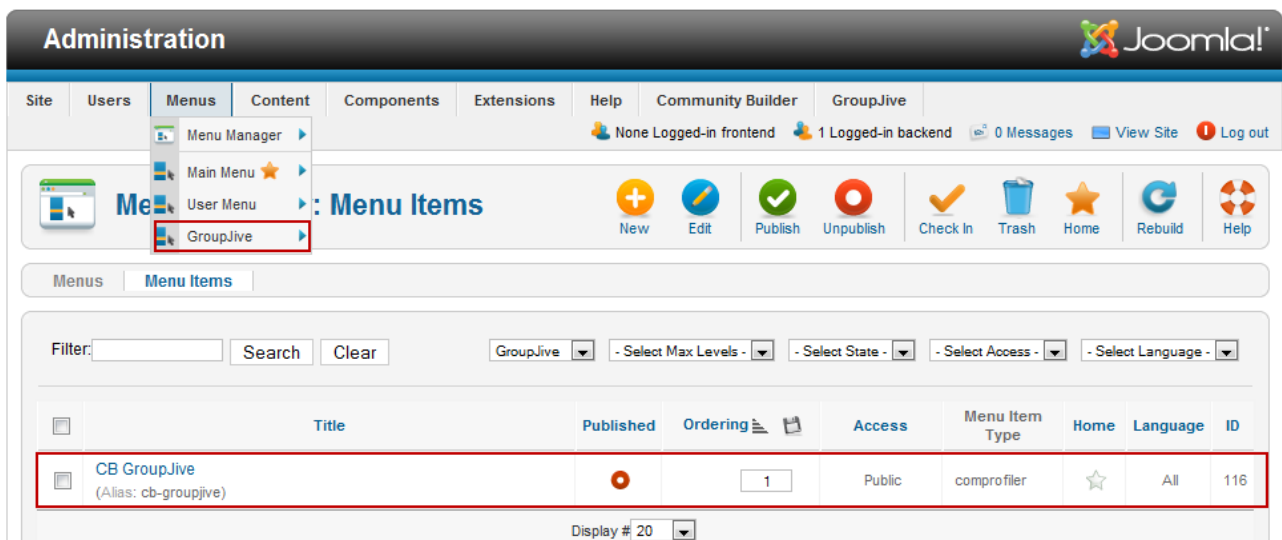


Figure 3: GroupJive Menu with single item

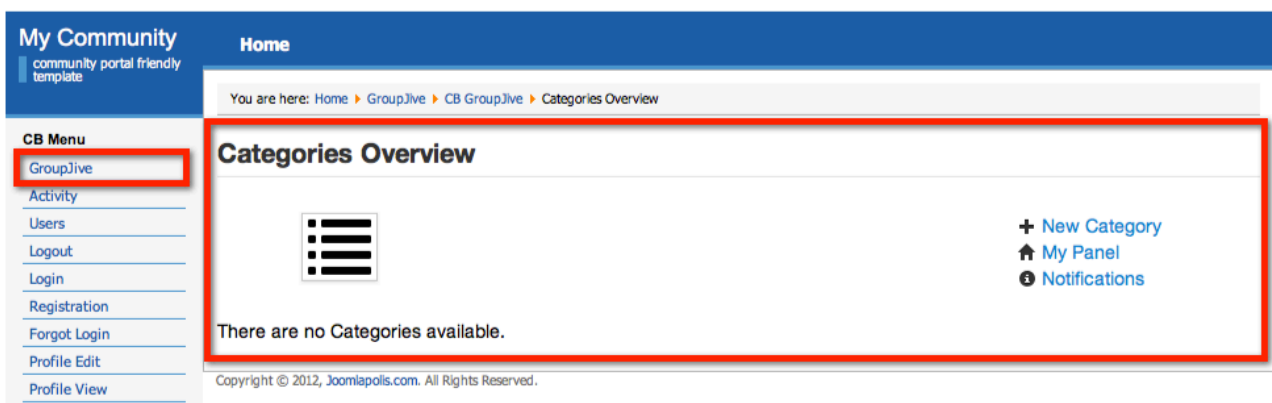
You are free to publish the CB GroupJive menu item and even move it to one of your other Joomla menus (in this case you can just remove the GroupJive menu from your installation). If you keep the GroupJive menu (as created by clicking on the create menu link), you will need to create a new Joomla menu module for the menu.

Let's summarize again the steps outlined up to now:

- Installation of GroupJive related plugins
- Publishing/enabling GroupJive related plugins
- Creation of GroupJive menu/menu item

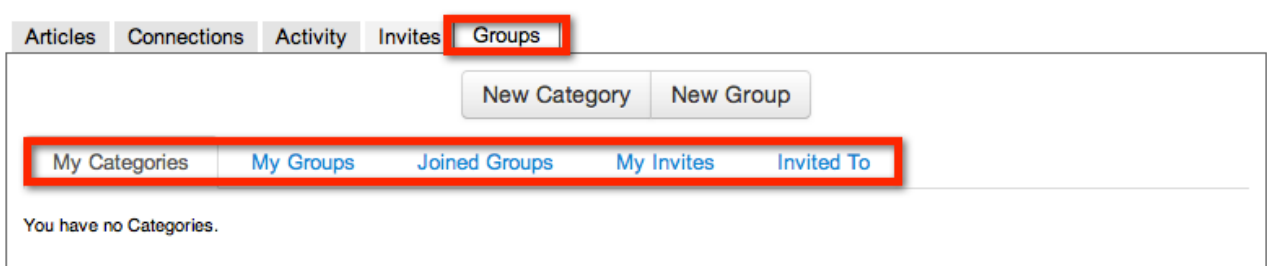
These steps will enable GroupJive operation on your website with all default settings.

You should be able to access the frontend GroupJive panel by clicking on the menu item created. This is illustrated in **Figure 4**.



**Figure 4: GroupJive frontend panel access**

You should also now see an extra tab on your CB profiles. This is illustrated in **Figure 5**.



**Figure 5: GroupJive CB Groups tab with sub-tabs**

There are many GroupJive related configurations that can be parameterized to modify the system's functionality to suite your needs. Please explore the various settings in your GroupJive backend panel as they are pretty much self-explanatory and straightforward.

Please note that forum integration needs Kunena forum extension to be installed and PMS integration needs uddelM PM extensions to be installed. CB has integration plugins built-in for both of these extensions.

## 4 Support

If your GroupJive experience is unsuccessful in any way or you feel that something is wrong and should be fixed or you want to express the need for a new feature or enhancement or just want to express your gratitude for this suite please take the time and visit us at the [www.joomlapolis.com](http://www.joomlapolis.com) website. A forum is maintained and monitored by the development team and many expert CB users are always lending a hand. This website also contains additional modules and plugins that have been developed by other CB users throughout the world. In any case, requesting a helping hand is a good idea and the CB users worldwide are a very nice bunch always willing to assist.

Before posting on the forums for assistance please make sure you have done your homework. This way you have a better chance of solving the problem yourself.

A workflow of proposed actions that should be followed before posting on the forums contains the following tasks orders as they should be completed:

1. **Read this document.** This document provides good installation and initial configuration information. A significant percentage of questions posted relate to problems that have as their root cause the simple fact that the installer did not follow the instructions posted in this document (see mandatory Public menu item need).
2. **Do your homework.** Before asking for assistance make sure you have done your homework. Most likely some other community member has already had a similar issue that might have been addressed either as a frequently asked question article

or as a forum response. **Please search before posting! Read all the FAQ articles!** Search the forum on Joomlapolis (there is a search box available on the forums) and use Google (as the problem could in fact not be directly related with CB/GroupJive).

3. Before posting read our **'Help Us Help You'** article on Joomlapolis Support → F.A.Q. area. It contains basic debugging process and instructs you to gather the proper information to make it easier for people responding to assist you.
4. Finally, if you have done everything and still have not found your solution, then post your issue on the proper forum. Provide feedback about your environment and your **'Help Us Help You'** findings. Be polite, patient and courteous – this is an open community driven support forum area. There are no service level agreement (SLA) metrics, so if you posted late Friday evening, don't expect a response before Monday and don't bump your post. Bumping is not allowed and if you do bump within hours of your post, the moderators will surely remove the bump without any notice. However, if your post remained unanswered for days (>4 days), then you can respond to the post in a polite manner giving further information regarding the attempts you have made to solve it. Finally, if a post still remains unanswered, you can bring it to the attention of one of the moderators by sending a private message with the forum post URL in it

Important URLs:

- Frequently Asked Questions:  
<http://www.joomlapolis.com/support/faq>
- Our language forge area for GroupJive:  
<http://forge.joomlapolis.com/projects/lan-gj>
- Our language area on Transifex for GroupJive:  
<https://www.transifex.net/projects/p/CB-GJ/>
- Our Tutorials on Joomlapolis:  
<https://www.joomlapolis.com/support/tutorials>

## **5 Conclusions**

The GroupJive Community Builder effort adds group functionality to your Community Builder website. The GroupJive system takes advantage of the very powerful CB API making it compatible with all stable Joomla 1.5, 2.5 and 3.0 versions.